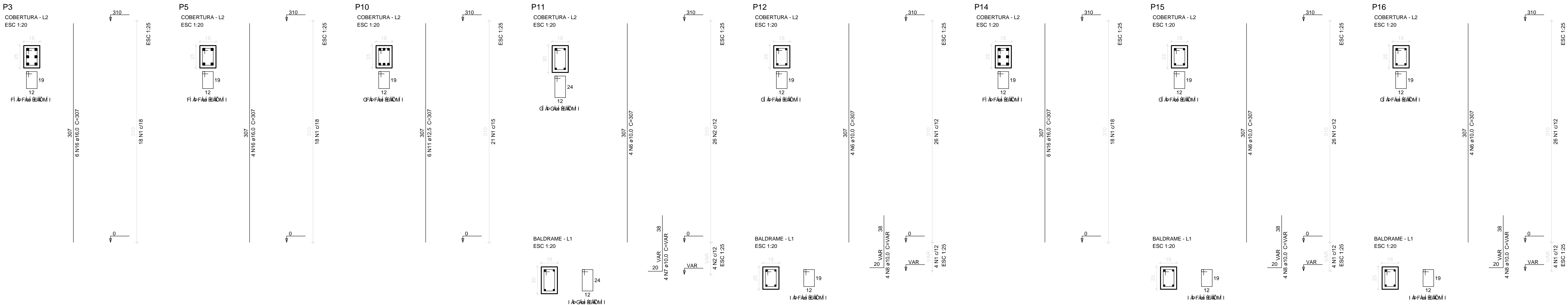


Table with 2 columns: Cobertura (Roof) and Plátibanda (Parapet). Rows list components P3, P10, P12, P15, P1, P4, P7 and P5, P11, P14, P16, P2, P6.

Table with 5 columns: C/U, N, DIAM (mm), QUANT, C.UNIT (cm), C.TOTAL (cm). Rows include CA60 and CA50 reinforcement details.

Table with 4 columns: C/U, DIAM (mm), C.TOTAL (m), PESO + 10% (kg). Rows include CA50 and CA60 reinforcement details.

Technical notes in Portuguese regarding reinforcement and structural requirements.



PLANTA PILARES PRUMADAS GERAL (1) - BLOCO 2

Project information box containing: EQUIPE TÉCNICA DA UGP, Engº Civil Mirela Silveira de Faria - CREA RS 146401, Arq. Estela Azeredo - CAU RS A42815-9, Arq. Juliana Rotta da Cunha - CAU RS A65378-0, and a table with project details like '06/10' and '1/20'.